

1688 Arabella Road • Cleveland, OH 44112
 Phone (216) 481-7400 • Fax (216) 481-8645
 Website <http://www.parkerhq.com>
 e-mail parker@parkerhq.com

TORQUE-TECH™

Parker Rust-Proof's Torque-Tech™ coating provides repeatable torque values on threaded joints in critical applications.

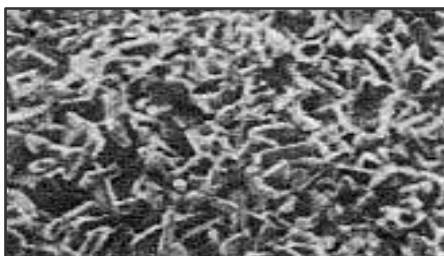
Reliable thickness • Superior Lubrication • Good corrosion resistance • Grey color

Developed originally to control crystal morphology on troublesome high-alloy materials, this coating prevents physical damage caused by friction of mating parts during installation and can help compensate for lower classes of fit in threaded joints. Unlike regular zinc phosphates that cause galling during assembly, Torque-Tech™ actually lubricates to promote ease of assembly, requiring less applied force to achieve a given tension.

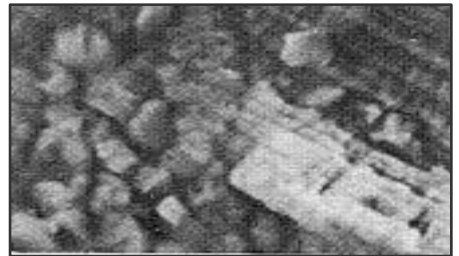
In combination with a dry-to-touch oil topcoat, this proprietary coating has demonstrated >144 hours of neutral salt spray testing per ASTM B117.



Heavy zinc phosphate crystals break off easily when handled, leaving exposed bare areas between the crystal roots to corrode. The coating has poor adhesion and the excess material causes galling.



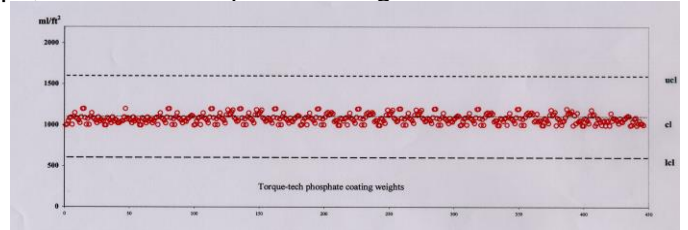
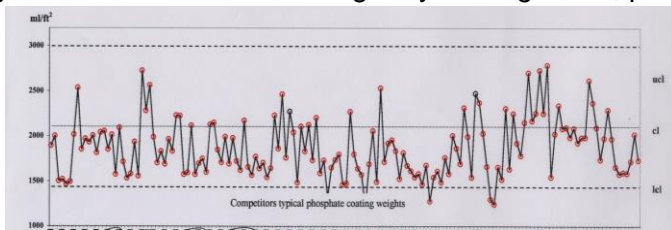
Conventional light zinc and iron phosphates provide only a thin layer of protection and virtually no corrosion resistance. Although the bonding potential may be good, the coating offers poor lubricity.



Torque-Tech™ coatings provide:
 EXCELLENT LUBRICITY
 EXCELLENT ADHESION
 EXCELLENT RUST PROTECTION
 EXCELLENT REPEATABILITY

Torque-Tech™ coatings eliminate the worst characteristics of both coatings and provide the best qualities of both. And best of all, the Torque-Tech™ coating that you need can be duplicated over and over with little variation.

And the best part is that it's repeatable, time after time, day in and day out. Unlike conventional coatings that require constant adjustments of automatic torquing equipment, what you need this month will be the same as you used last month. Boring for your engineers, perhaps, but we find it quite exciting.



IF YOU THINK ZINC PHOSPHATES ARE UNCONTROLLABLE AND CAUSE GALLING, WE CHALLENGE YOU TO TRY TORQUE-TECH. CALL US TODAY TO COAT YOUR SAMPLES.